

Swine Flu

Media Briefing

13 January 2011

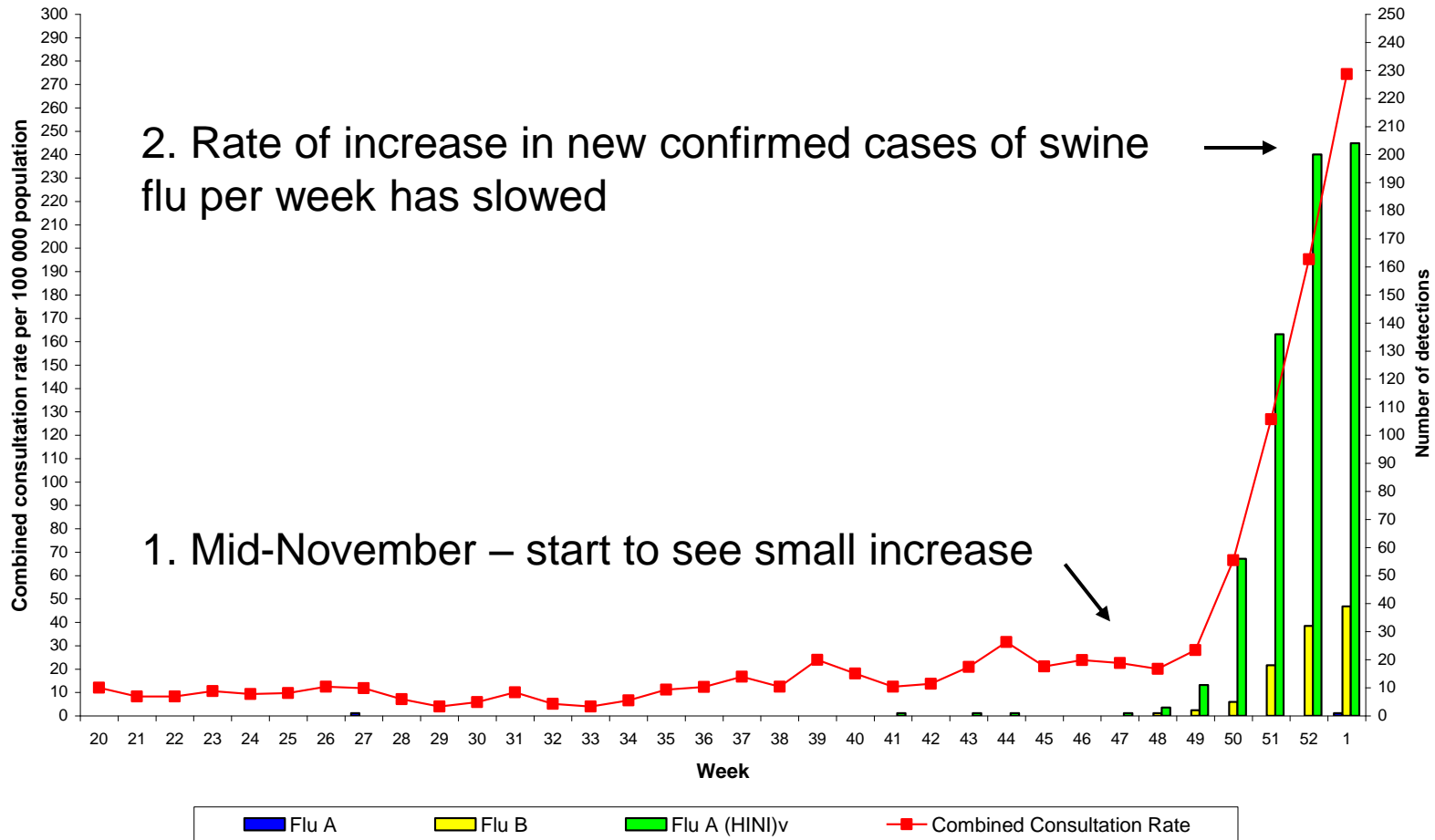
Overview

- Systems for monitoring swine flu
- Pattern of flu in Northern Ireland
- Updated swine flu deaths
- Vaccination programme

Systems for Monitoring Flu

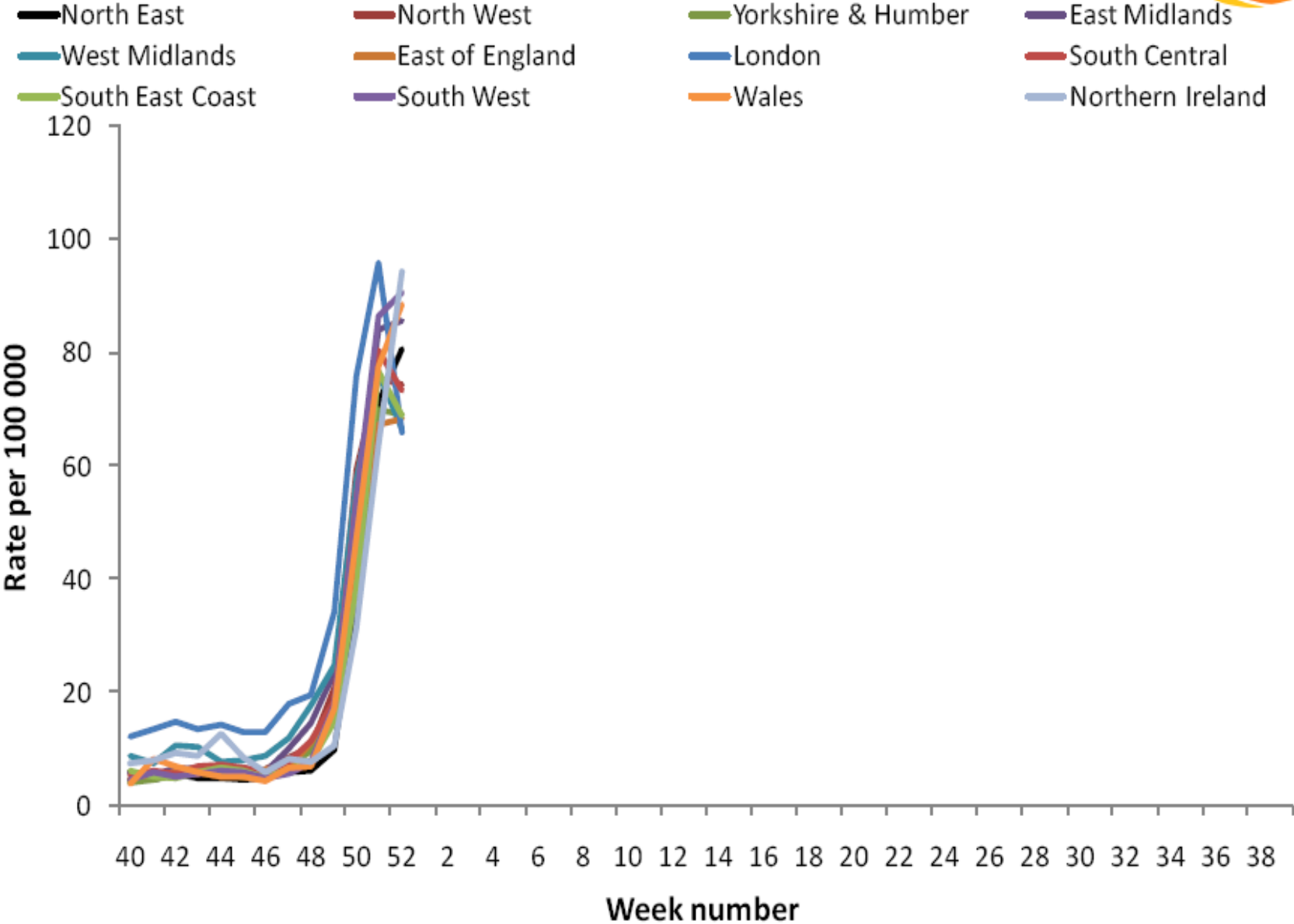
- Special arrangements in 2009 pandemic
 - Detailed data on deaths
 - Regular media briefings
- Flu 2010 – normal arrangements
 - Published weekly Flu Bulletin, with press release & media interviews
- Last week – public & media interest
 - Formally asked Trusts to inform us of all swine flu deaths
 - Publish confirmed swine flu deaths weekly, media briefings

Number of New Flu Cases

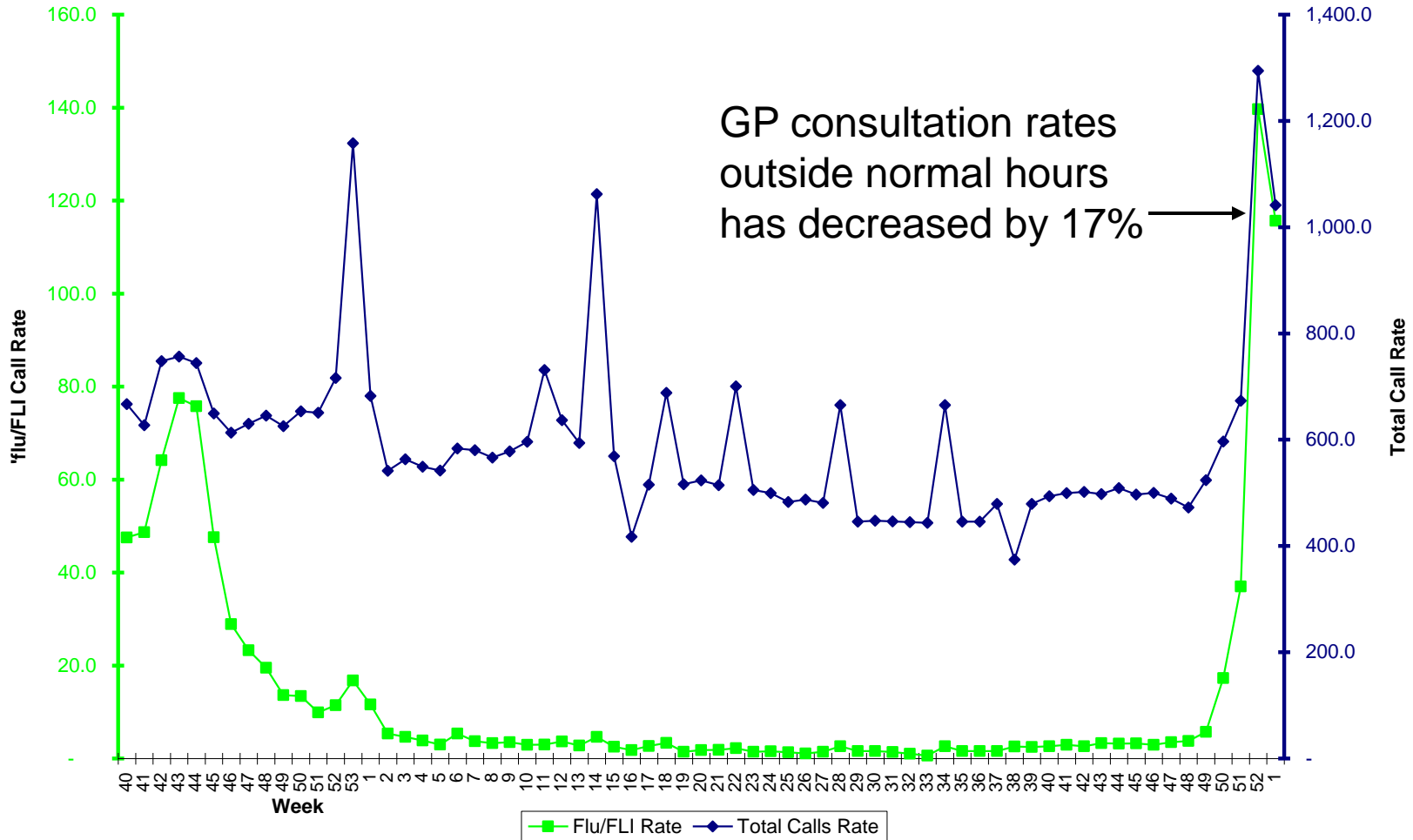




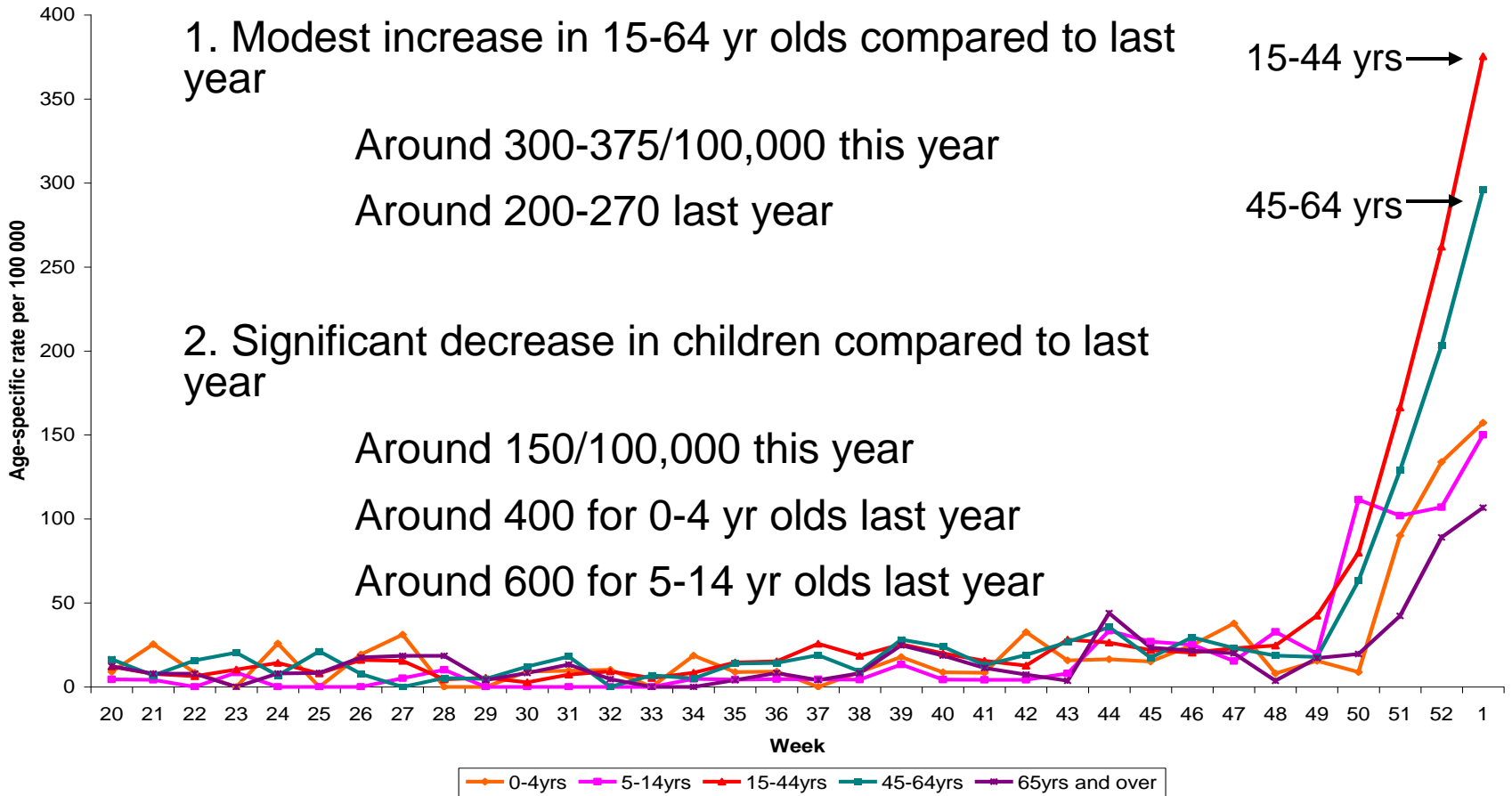
QSurveillance: Influenza-like illness by region



GP Consultation Rates for Flu & Flu-like Illness Outside Normal Hours



GP Consultation Rates by Age



Who is Already Immune?

Age Group (years)	% With H1N1 Antibodies
5-14	60-70%
15-24	40-50%
25-44	30-40%

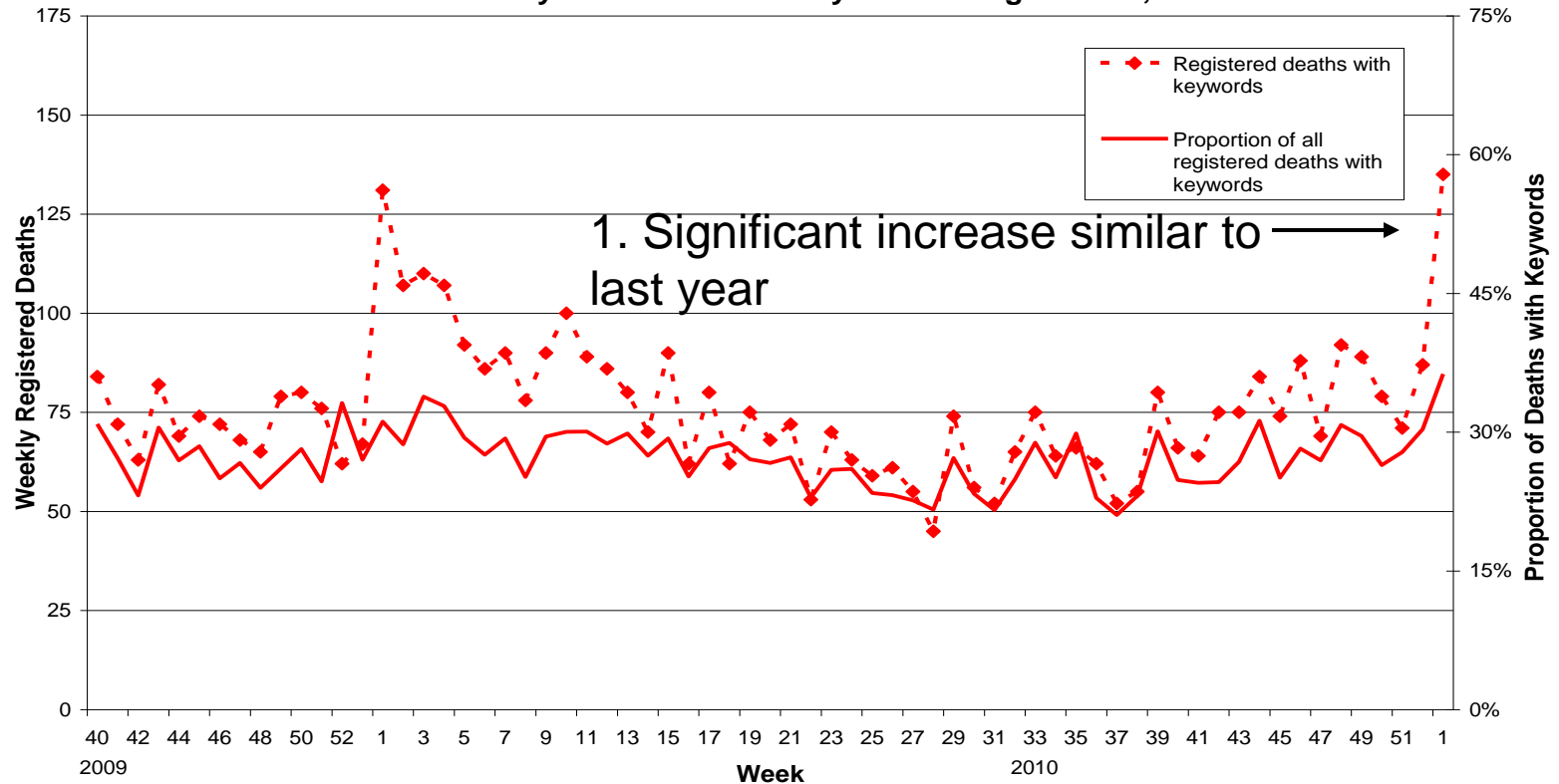
Source: Hardelid et al, Health Protection Agency, 2010

0-5 year olds were vaccinated last year – 38% accepted the vaccine

75% of children in special schools accepted the vaccine

Registered Deaths from Selected Respiratory Infections

Deaths due to influenza, bronchitis, bronchiolitis, pneumonia and proportion of all deaths with keywords mentioned by week of registration, 2009-10



Summary of NI Swine Flu Deaths this Year & Last Year

	This yr	Last yr	Total	%Total Deaths*
Person had an underlying condition	14	18	32	94
Person did not have an underlying condition	2	0	2	6
Being confirmed	1	1	2	N/A
Total	17	19	36	

* % of Total swine flu deaths for this year and last year where information on underlying conditions has been confirmed

Comparison of Swine Flu Deaths in NI & the UK in this Year & Last Year

	NI		UK	
	Last yr	This yr	Last yr	This yr
% People who died from swine flu who had an underlying condition	100%	87%	67%	77%
% People who died from swine flu who did not have an underlying condition	0%	13%	23%	33%
% People admitted to hospital who had an underlying condition	49%		55%	
% People admitted to hospital who did not have an underlying condition	51%		45%	

Summary Messages 13 Jan

- High levels of flu and flu-like illness
 - Fewer children affected compared to 2009
 - This mainly affecting 15-64 yr olds;
 - People with underlying conditions remain at much greater risk
 - People without underlying conditions are still affected
 - Rate of increase in new cases has slowed
- Current pattern is similar to UK

Vaccination

- UK Vaccination policy is set by Departments of Health & is based on advice from the Joint Committee on Vaccination & Immunisation
- Goal is to protect those at most risk of flu-related complications
- Targeted therefore at people in high-risk groups
- PHA does not determine the policy but will implement any change in vaccination policy

Vaccine Uptake Rates are Higher Here

	NI	England
<i>2010 Flu season to end Nov 2010</i>		
Under 65s at-risk	56%	42%
65+	67%	67%
<i>2009 Pandemic to end March 2010</i>		
Under 65s at-risk	80%	52%
65+	77%	72%

Vaccine Availability

- Sufficient vaccine to protect all at-risk people from swine flu
- 414,000 flu vaccine doses already distributed to GPs and Trusts with sufficient swine flu vaccine available for any remaining at-risk patients
- GPs will continue to use the seasonal flu vaccine that they may still have
- Reorders will be filled from the swine flu vaccine supplies